

Memory Module Specifications

KSM26RS8/16HCR

16GB 1Rx8 2G x 72-Bit PC4-2666

CL19 Registered w/Parity 288-Pin DIMM

DESCRIPTION

Kingston's KSM26RS8/16HCR is a 2G x 72-bit (16GB) DDR4-2666 CL19 SDRAM (Synchronous DRAM) registered w/ parity, 1Rx8, ECC, memory module, based on nine 2G x 8-bit FBGA components. The SPD is programmed to JEDEC standard latency DDR4-2666 timing of 19-19-19 at 1.2V. Each 288-pin DIMM uses gold contact fingers. The electrical and mechanical specifications are as follows:

FEATURES

- Power Supply: VDD = 1.2V
- VDDQ = 1.2V
- VPP = 2.5V
- VDDSPD = 2.41V to 2.75V
- Functionality and operations comply with the DDR4 SDRAM datasheet
- 16 internal banks
- Bank Grouping is applied, and CAS to CAS latency (tCCD_L, tCCD_S) for the banks in the same or different bank group accesses are available
- Data transfer rates: PC4-2666, PC4-2400, PC4-2133, PC4-1866, PC4-1600
- Bi-Directional Differential Data Strobe
- 8 bit pre-fetch
- Burst Length (BL) switch on-the-fly BL8 or BC4(Burst Chop)
- Supports ECC error correction and detection
- On-Die Termination (ODT)
- Temperature sensor with integrated SPD
- This product is in compliance with the RoHS directive.
- Per DRAM Addressability is supported
- Internal Vref DQ level generation is available
- Write CRC is supported at all speed grades
- CA parity (Command/Address Parity) mode is supported

SPECIFICATIONS

CL(IDD)	19 cycles
Row Cycle Time (tRCmin)	46.25ns(min.)
Refresh to Active/Refresh Command Time (tRFCmin)	350ns(min.)
Row Active Time (tRASmin)	32ns(min.)
Maximum Operating Power	*
UL Rating	94 V - 0
Operating Temperature	0° C to +85° C
Storage Temperature	-55° C to +100° C

*See IDD Specifications (page 2)

Module Assembly

DRAM: HYNIX (C-DIE)

RCD: Rambus

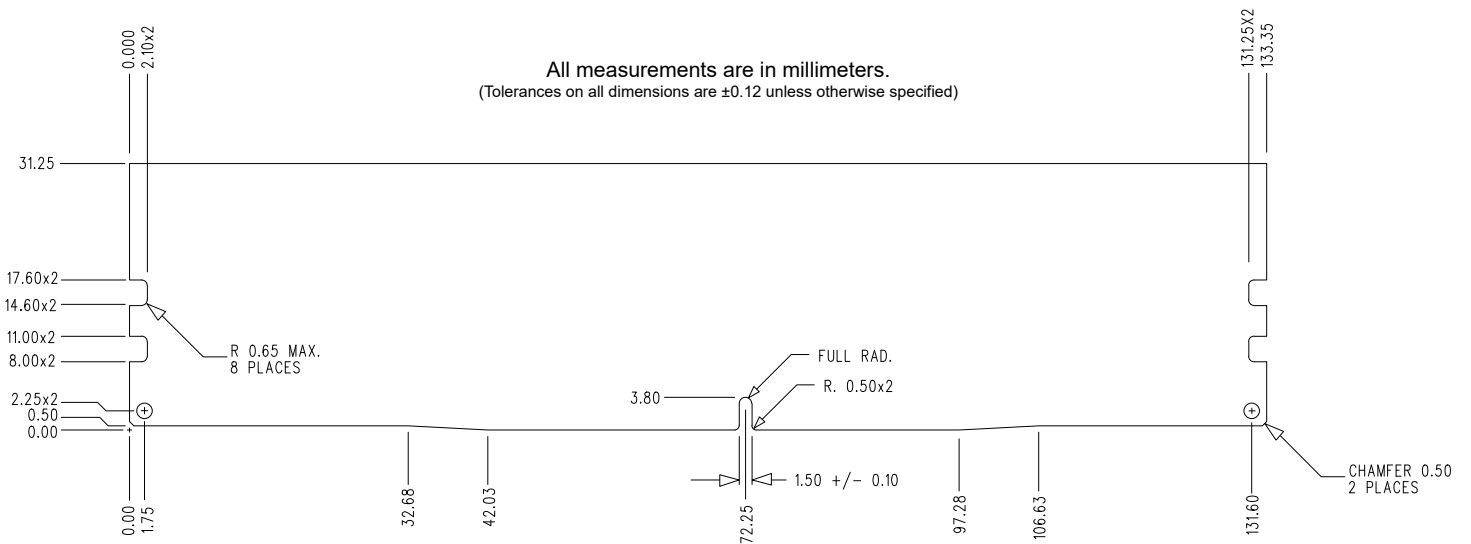
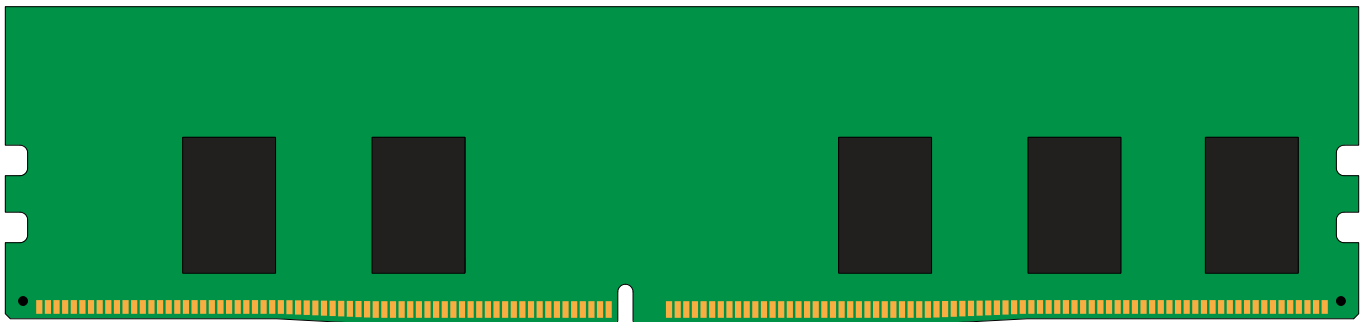
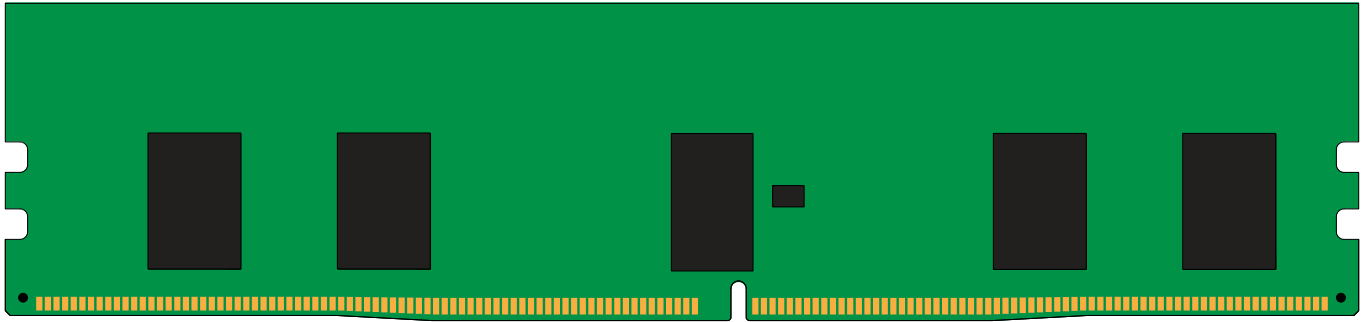
Continued >>

IDD Specifications

IDD		unit
Symbol	2666	
IDD0	800	mA
IDD0A	800	mA
IDD1	900	mA
IDD1A	933	mA
IDD2N	712	mA
IDD2NA	712	mA
IDD2NT	753	mA
IDD2NL	639	mA
IDD2NG	711	mA
IDD2ND	695	mA
IDD2NP	719	mA
IDD2P	465	mA
IDD2Q	687	mA
IDD3N	843	mA
IDD3NA	843	mA
IDD3P	837	mA
IDD4R	1605	mA
IDD4RA	1623	mA
IDD4RB	1616	mA
IDD4W	1563	mA
IDD4WA	1605	mA
IDD4WB	1494	mA
IDD4WC	1556	mA
IDD4WP	1782	mA
IDD5B	5110	mA
IDD5F2	3664	mA
IDD5F4	3115	mA
IDD6N	320	mA
IDD6E	537	mA
IDD6R	136	mA
IDD6A	549	mA
IDD7	1785	mA
IDD8	96	mA

IPP		unit
Symbol	2666	
IPP0	29	mA
IPP1	33	mA
IPP2N	16	mA
IPP2P	16	mA
IPP3N	19	mA
IPP3P	19	mA
IPP4R	53	mA
IPP4W	53	mA
IPP5B	491	mA
IPP5F2	323	mA
IPP5F4	269	mA
IPP6N	65	mA
IPP6E	115	mA
IPP6R	28	mA
IPP6A	101	mA
IPP7	139	mA
IPP8	16	mA

MODULE DIMENSIONS



The product images shown are for illustration purposes only and may not be an exact representation of the product.
Kingston reserves the right to change any information at anytime without notice.